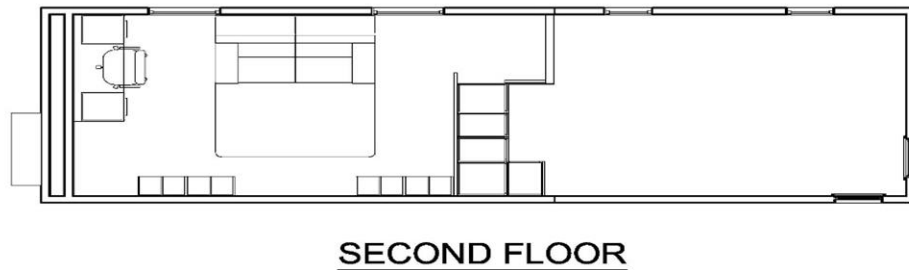
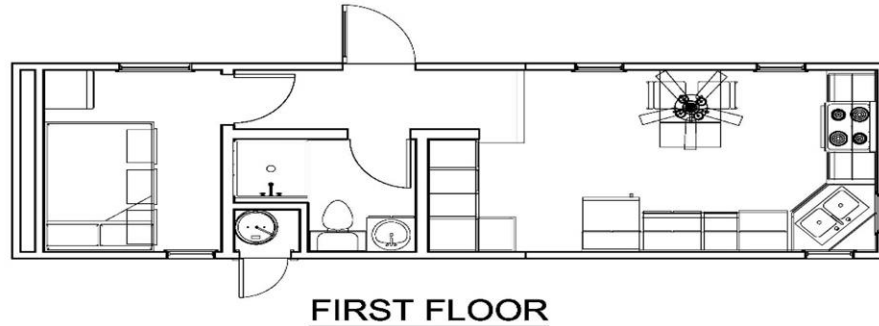


TINY HOME MODEL 1036_01

PREFABRICATED WOOD FRAMED MODULAR BUILDING MEASURING 10'-0" WIDE X 36'-0" LONG



EXTERIOR CONSTRUCTION MATERIALS

- 2" X 6" DOUBLE PERIMETER FRAME RIM JOIST
- 2" X 4" EXTERIOR WALL FRAMING
- 2" X 6" ROOF FRAMING
- 7/16" LP SMART PANEL EXTERIOR SIDING
- 100 AMP ELECTRICAL PANEL
- 6" C-CHANELL TRANSPORT FRAME WITH HITCH AND REAR STORAGE
- FORMALHEDYDE FREE INSULATION

INTERIOR CONSTRUCTION FEATURES

- PAINTED 4"X8' GROOVED PANELING 5/8" THICK
- PAINTED WOOD BASE TRIM THROUGHOUT
- PAINTED 4" LP SMART PANEL TRIM AROUND WINDOWS, DOORS, CORNERS, EXTERIOR
- LONG-LIFE RECESSED CAN LIGHTS
- HEAVY DUTY EXT. WALL MOUNT AIR CONDITIONING UNIT WITH 10KW HT, 2 TON TC, 700 CFM
- RESILIENT LUXURY VINYL TILE PLANK TO KITCHEN AND LIVING AREA
- HEAVY DUTY CARPET TO BEDROOM AREA
- REMOTE CONTROL CEILING FAN WITH LED LIGHT
- LED LIGHTING THROUGHOUT
- LOW-E WINDOWS

KITCHEN FEATURES

- CHROME FIXTURES
- STAINLESS STEEL DEEP DOUBLE BOWL SINK
- LUXURY QUALITY LAMINATED COUNTERTOP WITH BACKSPLASH
- OAK WOOD BASE AND UPPER CABINETS
- STAINLESS STEEL MIRCOWAVE WITH BUILT IN HOOD FAN
- SMOKE DETECTORS

BATHROOM FIXTURES

- PORCELAIN LAVATORY SINK
- 36" FIBERGLASS SHOWER WITH SHOWER HEAD
- TOWEL AND PAPER HOLDER
- CHROME BATHROOM FAUCET
- STANDARD WHITE TOILET

ADDITIONAL FEATURES

- IN STAIR STORAGE
- ADDITIONAL UNDER MATTRESS STORAGE
- (6) LARGE IN WALL STORAGE CABINETS

Base Price \$ _____

OPTIONAL FEATURES - SUPPLIED AND INSTALLED AT BRITCO FACTORY

- OAK 24" X 30" X 84" UTILITY CABINET WITH FULL DEPTH SHELF FOR U-24 CABINETS
- OAK 30" PLAS-LAM STUDY DESK WITH 2 DRAWER WOOD FILE BASE
- OAK 60" X 80" QUEEN BED WITH HEADBOARD, (3) DRAWERS UNDER, STORAGE CABINET OVER BED
- PILLOW TOP MATTRESS FOR QUEEN SIZED BED
- SHOWER CURTAIN - 36"
- PLAS-LAM TABLE W/ FOLD WING TO SEAT (4)
- (4) DINING TABLE WOOD CHAIRS
- OAK NIGHTSTAND WITH P-LAM TOP
- OFFICE MID BACK MESH CHAIR W/ ARM
- QUEEN SOFA SLEEPER BED AND NITE TABLE
- 32" SMART FLAT PANEL TV WITH WALL ARTICULATING BRACKET
- DECORATIVE WINDOW BLINDS ON ALL WINDOWS
- 22 CU FT, FROST FREE, REFRIGERATOR STAINLESS
- 4 BURNER GLASS TOP ELECTRIC RANGE STAINLESS
- 2.3-CU FT VENTLESS COMBINATION WASHER AND DRYER
- OAK ENTERTAINMENT CABINET WITH STORAGE
- EXTERIOR DECK

Total Options \$ _____